

SPOOL INSULATOR

(ANSI Standard Type)

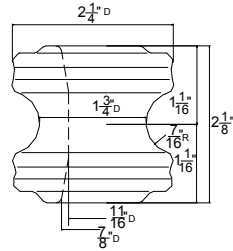


Fig 1

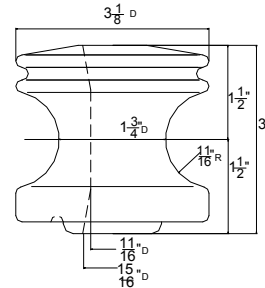


Fig 2

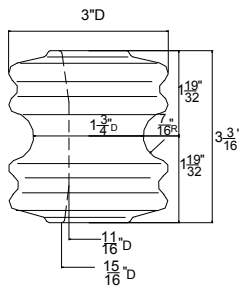


Fig 3

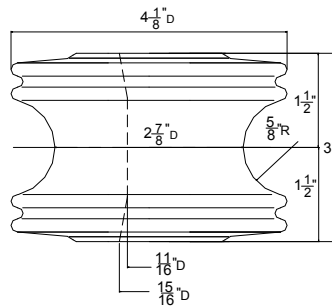


Fig 4

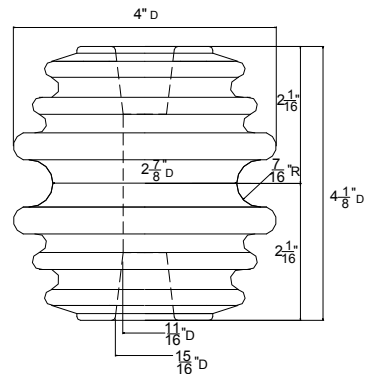


Fig 5

STANDARD PARTICULARS

Fig No.		1	2	3	4	5	
ANSI Class		53-1	53-2	53-3	53-4	53-5	
Transverse Strength/lb(KN)		2000(89)	3000(13.3)	4000(17.8)	4500(20)	6000(26.7)	
Average	Low-Freq. Dry/KV	20	25	25	25	35	
Flashover Voltage	Low-Freq. Wet/KV	Vertical	8	12	12	12	18
		Horizontal	10	15	15	15	25
Net Weight/lb(kg)		0.48(0.22)	1.2(0.55)	1.2(0.55)	2.2(1.0)	2.6(1.2)	

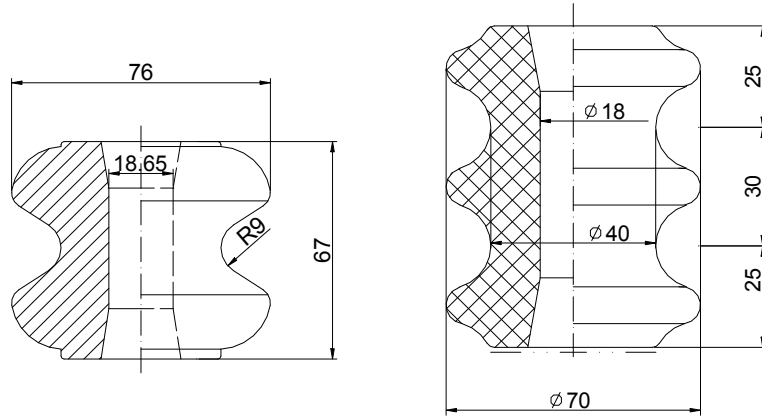
Notes: 1. In mechanical test, glaze chips or partial porcelain cracks should be allowed.

2. Hardware for these insulators are available upon request.

Standard Specification: ANSI C29.3

NON-STANDARD SPOOL INSULATOR

(ANSI Standard Type)



STANDARD PARTICULARS

Fig. No.	1	2	
Low frequency flashover-KV	20	25	
Low frequency wet flashover	Vertical-KV	10	12
	Horizontal-KV	9	15
Transverse strength –KN	9.5	13.5	
Weight(approx)-kg	0.4	0.4	